

Triple Scalable IP Network System



Network Recorder

INR-Q500

Large 32 stream high-quality images with extended recording time

INR-Q500 is a network recorder incorporating IPD-Q01P(PAL Model)/IPD-Q01(NTSC Model) network camera and IEN-T01P(PAL Model)/IEN-T01(NTSC Model) network encoder. Sounds and JPEG2000 images compressed by the network camera/network encoder are transmitted through the network and recorded on the hard disk. The recorded data can be played back on the split-display using the web browser of network-connected PCs.

Live images from the network camera/network encoder can also be viewed on the split display.

In addition, the alarm mail function sends a warning email when an alarm or fault occurs, so even if you are off site, you know if something is amiss.

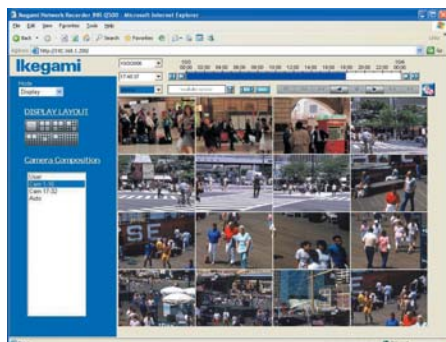
■ To allow long-term storage of important scenes, back-up functions provided as standard allow important images to be copied to DVD media. E-mails can be sent with JPEG image attachments.



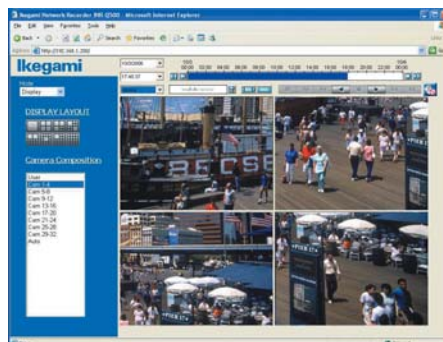
■ INR Player is software to replay images recorded by the Ikegami INR-Q500 IP Network Video Recorder. It replays alarm images backed up to DVD-RAM and images downloaded to a PC.



This software can be downloaded from our homepage



A delivery screen example



■ Records up to 32 image streams (images from 32 cameras).

■ Full dynamic recording (maximum image quality and resolution) with nine connected cameras or recording at 7.5 fps with 32 cameras connected. The Multi-window function provides the optimal images for monitoring multiple cameras. Split the screen into 1, 4, 7, 10, 13, or 16 images. Display live and recorded images simultaneously to continue live monitoring while checking recorded images.

Triple Scalable IP Network System

Network Recorder

INR-Q500



Recording Time Chart (PAL) [HDD:500GB]

■ Recording Rate: 1 fps (Max. 32 cameras)

| Picture Quality | 1 camera | 16 cameras | 32 cameras |
|-----------------|--------------|-------------|------------|
| A | 3,849 hours | 241 hours | 120 hours |
| B | 5,107 hours | 319 hours | 160 hours |
| C | 7,587 hours | 474 hours | 237 hours |
| D | 14,753 hours | 922 hours | 461 hours |
| E | 26,556 hours | 1,660 hours | 830 hours |

■ Recording Rate: 3 fps (Max. 32 cameras)

| Picture Quality | 1 camera | 16 cameras | 32 cameras |
|-----------------|-------------|------------|------------|
| A | 1,232 hours | 77 hours | 38 hours |
| B | 1,634 hours | 102 hours | 51 hours |
| C | 2,428 hours | 152 hours | 76 hours |
| D | 4,721 hours | 295 hours | 148 hours |
| E | 8,498 hours | 531 hours | 266 hours |

■ Recording Rate: 5 fps (Max. 32 cameras)

| Picture Quality | 1 camera | 16 cameras | 32 cameras |
|-----------------|-------------|------------|------------|
| A | 770 hours | 48 hours | 24 hours |
| B | 1,021 hours | 64 hours | 32 hours |
| C | 1,517 hours | 95 hours | 47 hours |
| D | 2,951 hours | 184 hours | 92 hours |
| E | 5,311 hours | 332 hours | 166 hours |

■ Recording Rate: 12 fps (Max. 19 cameras)

| Picture Quality | 1 camera | 8 cameras | 19 cameras |
|-----------------|-------------|-----------|------------|
| A | 308 hours | 38 hours | 16 hours |
| B | 409 hours | 51 hours | 22 hours |
| C | 607 hours | 76 hours | 32 hours |
| D | 1,180 hours | 148 hours | 62 hours |
| E | 2,124 hours | 266 hours | 112 hours |

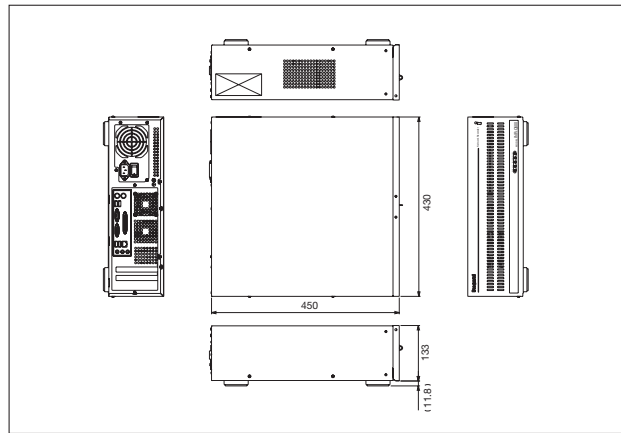
■ Recording Rate: 25 fps (Max. 9 cameras)

| Picture Quality | 1 camera | 4 cameras | 9 cameras |
|-----------------|-------------|-----------|-----------|
| A | 154 hours | 38 hours | 17 hours |
| B | 204 hours | 51 hours | 23 hours |
| C | 303 hours | 76 hours | 34 hours |
| D | 590 hours | 148 hours | 66 hours |
| E | 1,062 hours | 266 hours | 118 hours |

Specification

| | |
|--|---|
| HDD | 500GB (standard 250GB x 2) 1TB (option) |
| Compatible network camera / encoder | IPD-Q01P(PAL Model)/IPD-Q01(NTSC Model) IEN-T01P(PAL Model)/IEN-T01(NTSC Model) |
| No. of cameras connectable | Up to 32 units |
| Simultaneous connectable clients | Up to 4 units |
| Server function | Web server, DHCP server, NTP server |
| Recording function | Image recording of 240 fps maximum (at highest resolution and picture quality) Audio recording Scheduled recording (up to 32 x 10 programs) Alarm (motion detection, external input) recording |
| Streaming function | Live streaming and replay streaming |
| Display function | 1/4/7/10/13/16 split-screen display on client PC |
| Search function | Date and time, alarm (motion detection, external input), motion detection |
| Alarm mail function | Alarms and troubles notified via e-mail to 10 addresses maximum. Point-of-alarm JPEG images attachable to e-mail. |
| Network interface | 10BASE-T/100BASE-TX/1000BASE-T, 1 line (RJ-45) |
| Input voltage | AC 230 V ±15%, 50 Hz |
| Power consumption | Approx. 180 W (500GB) Approx. 220 W (1TB) |
| Ambient operating temperature / humidity | +5 to +40°C, 20-80%RH (no condensation) |
| Outer dimensions | 430 (W) x 133 (H) x 450 (D) mm (without projections) |
| Weight | Approx. 12.5 kg (500GB) Approx. 14 kg (1TB) |
| Accessories | Instruction Manual (Setup Instructions) 1 AC power cable 1 Lock fixture 1 Lock fixture mounting screw 2 |

Dimensions



This is the component logo for Ikegami Triple Scalable IP Network products.

Design and specifications are subject to change without notice.

*NTSC versions are not available with CE Mark.



U127A0611-H15

Ikegami Tsushinki Co.,Ltd.

■ URL : <http://www.ikegami.co.jp/en/>

■ **Head Office**

5-6-16 Ikegami, Ohta-ku, Tokyo 146-8567, Japan TEL.+81-(0)3-5700-1111 / FAX.+81-(0)3-5700-1137

■ **Overseas Sales Division**

5-6-16 Ikegami, Ohta-ku, Tokyo 146-8567, Japan TEL.+81-(0)3-5700-4117 / FAX.+81-(0)3-5700-4120

Ikegami Electronics (Europe) GmbH

■ URL : <http://www.ikegami.de>

<http://www.ikegami.co.uk>

■ **Headquarters**

Ikegami Strasse 1, D-41460 Neuss, Germany TEL.+49-(0)2131-1230 / FAX.+49-(0)2131-102820

UK CUSTOMER SUPPORT HELP LINE TEL.+44-(0)560-043-3769



Certified JQA-0755



Certified JQA-EM3888



Accredited by the Dutch Council for Certification