

Ikegami *Network Camera/Encoder*
Easy setting Tool

INSTALLATION MANUAL

Contents

Introduction.....	3
Operating Environment.....	3
Installation	4
Start method.....	8
Uninstall instructions.....	9

Operating instructions

License Agreement

Usage of the computer programs and related documentations for "AVI Convert Tool" (Here in after referred to as "the Software") is granted upon the condition that you comply with the following terms and conditions. By using the Software, you are assumed to have read and consented to the terms of this license agreement. If you do not agree with the terms of this license agreement, you are not allowed to use the Software.
The Software is provided to the customer free of charge.

License

The customer is allowed to install the Software in the customer's personal computer and use it. However, copyright for the Software belongs to the manufacturer (Hereinafter called "Owner") and shall not be transferred to the customer.

Restrictions

The customer may not take any of following actions, otherwise the Software License Agreement will be terminated immediately:

- (1) Copy, modify or otherwise duplicate the whole or a part of the Software without the Owner's permission;
- (2) Decompile or modify using reverse engineering, disassemble, or otherwise reprogram the Software;
- (3) Distribute, sell, sublease or lease the Software to third parties;
- (4) Transfer ownership of the Software License Agreement without permission of the Owner

Disclaimer

- (1) The Owner makes no warranty or representations that the Software will run uninterrupted or is error free.
- (2) The Owner shall not guarantee that the functions and performance of the Software will meet the requirements of the customer.
- (3) The Owner shall not be responsible for losses sustained by the customer or the recovery of damages incurred by a third party, or any other cost incurred in using the Software.

The customer shall be very careful and shall take appropriate measures when using the Software, to ensure that such use does NOT violate any privacy or copyright laws when dealing with movies (voices).

Change of Specifications

The specifications or design of the software and the contents of the instruction manual may be changed without notice by the Owner.

Introduction

This manual provides instructions on how to install the network camera/network encoder and easy setting tool.

Operating Environment

The operating environment for software installation is as follows:

- CPU: Intel Pentium® 4 2.0 GHz or more
- Memory: 256 MB or more (512 MB or more recommended)
- Operating System
 Microsoft® Windows® XP® Operating System
- Browser: Microsoft® Internet Explorer® 6.0

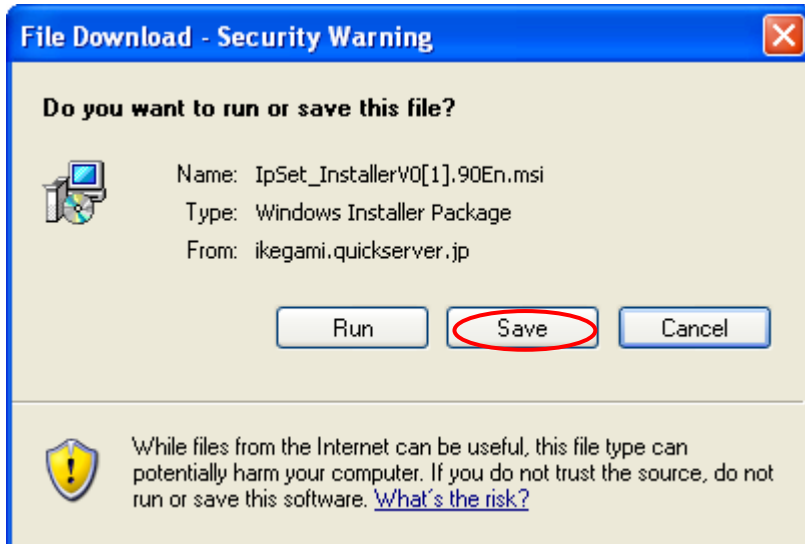
Intel and Pentium are trademarks or registered trademarks of Intel Corporation or its subsidiaries in the United States and other countries.

Microsoft, Windows, and Internet Explorer are trademarks or registered trademarks of Microsoft Corporation or its subsidiaries in the United States and other countries.

In this manual, Microsoft product screen shot(s) reprinted with permission from Microsoft Corporation.

Installation (1)

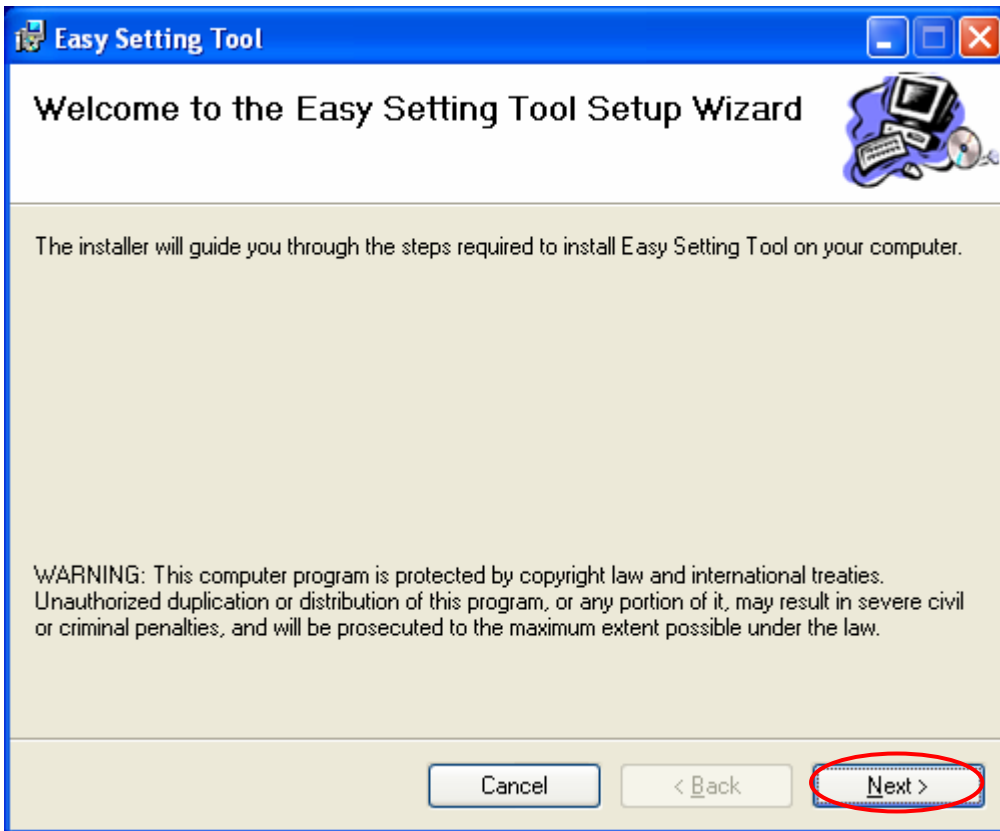
Click on the "IpSet_InstallerVx.xxEn.msi" file from the IKEGAMI's support page <http://www.ikegami.co.jp/en/products/security/index.html>. When the [File Download - Security Warning] dialog box is displayed, click on the "Save" button.



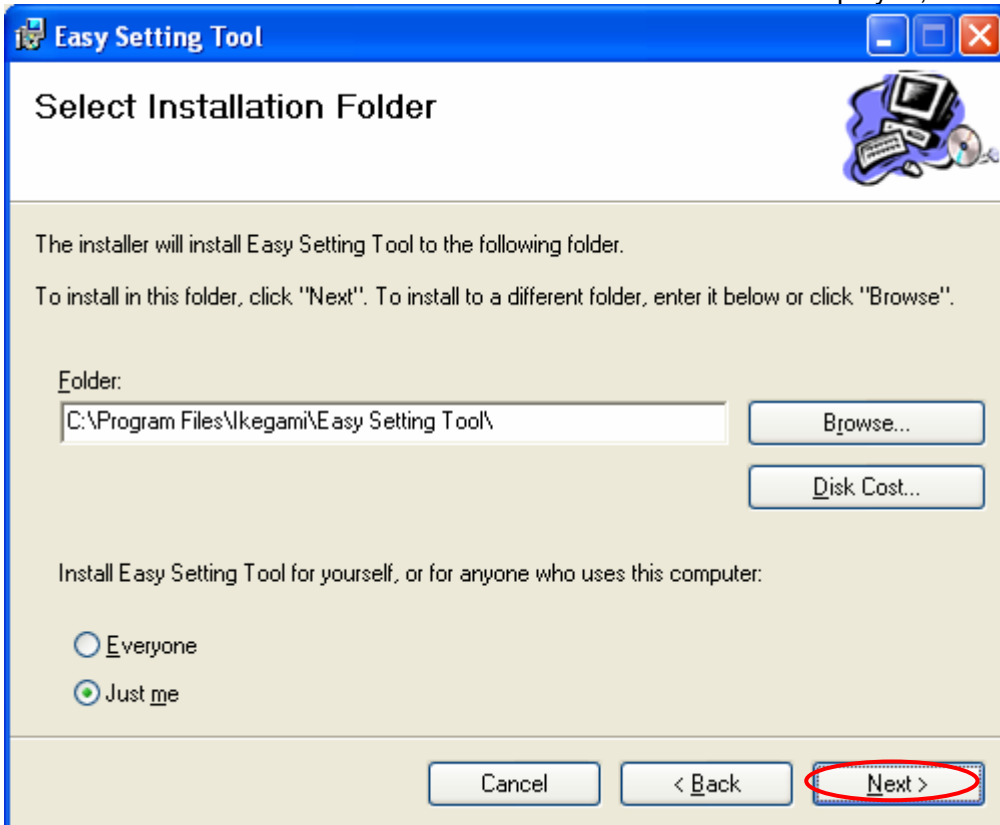
Double click on "IpSet_InstallerVx.xxEn.msi" located in the folder which contains the file.

Installation (2)

When the Tool Setup Wizard window shown below is displayed, click on the [Next] button.

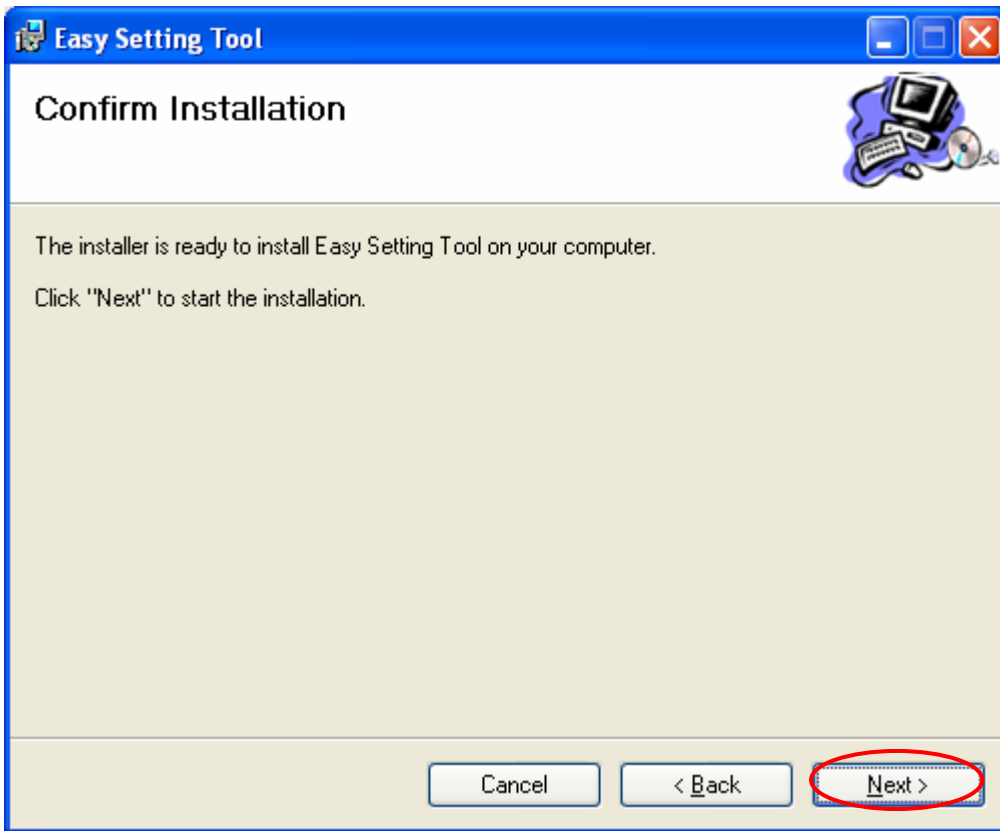


When the Select Installation Folder window shown below is displayed, click on the [Next] button.

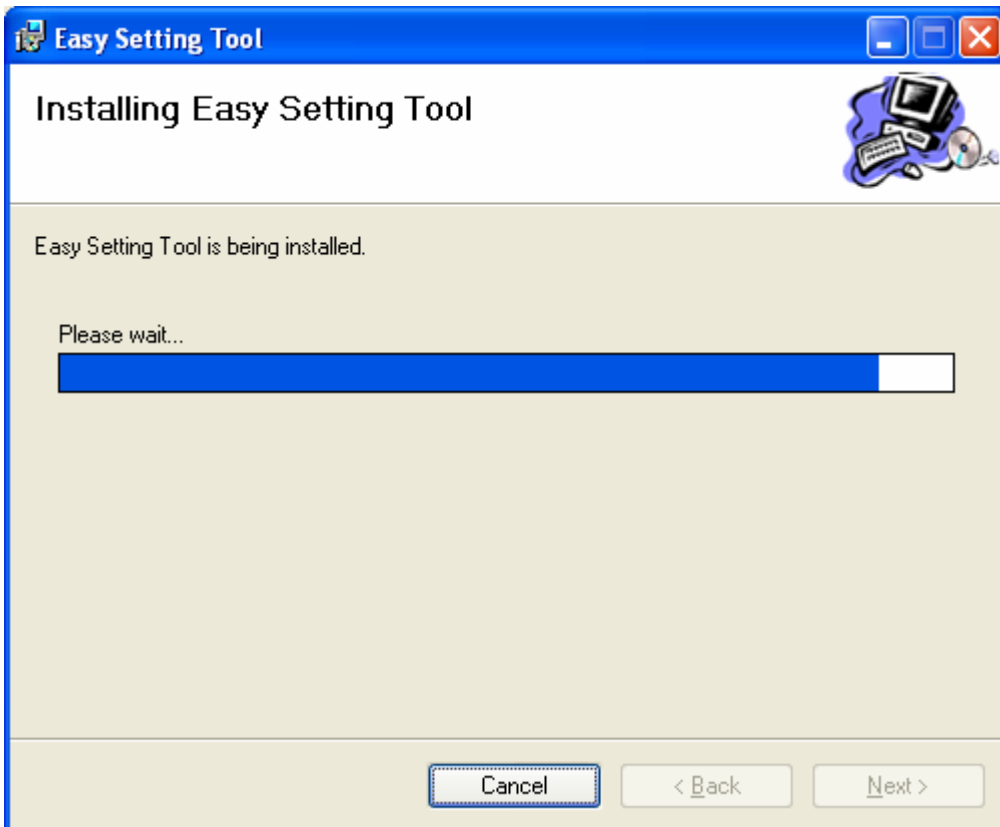


Installation (3)

In the Confirm Installation window shown below, click on the [Next] button.

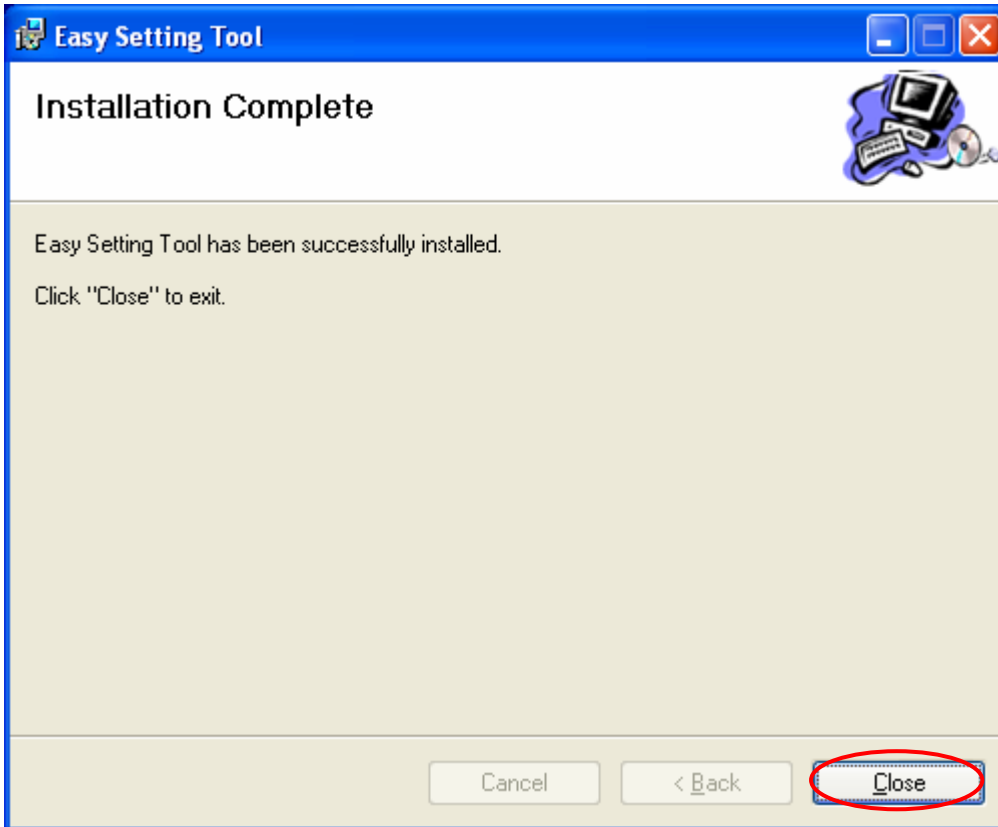


The following window shows the progress of the software installation.



Installation (4)

When the Installation Complete message window shown below is displayed, the installation has been successfully completed. Click on the [Close] button.



The "Easy Setting Tool" icon will be created on the Windows desktop.

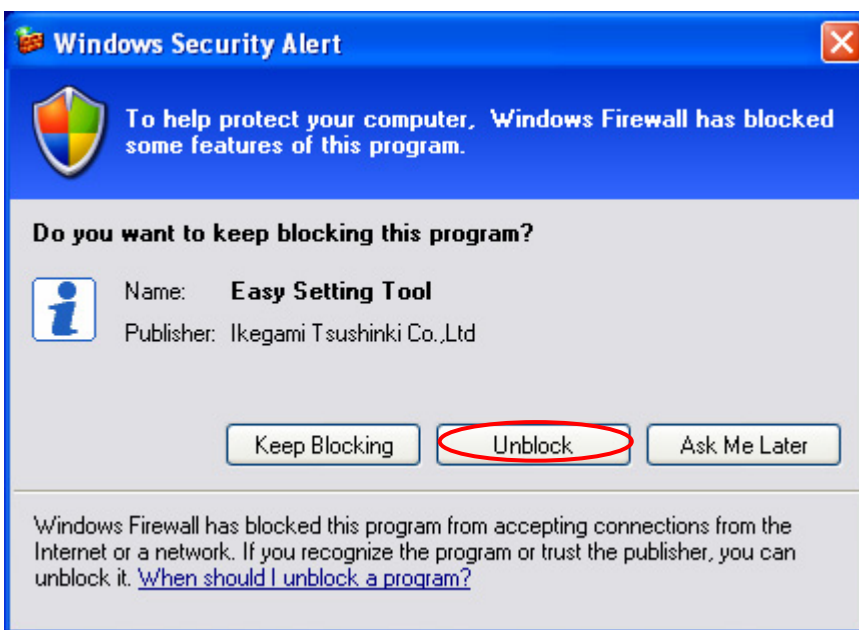


Start method

1. Starting up

Double click on the "Easy Setting Tool" icon on the Windows desktop.

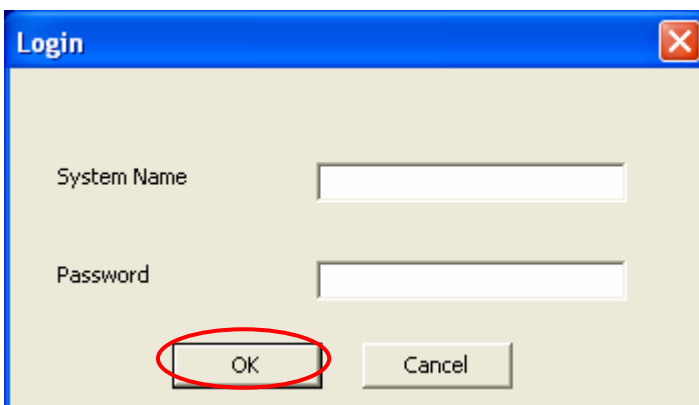
If the operating system is WindowsXP SP2, the [Windows Security Alert] window will be displayed when Windows is started up for first time after installing the Easy Setting tool. In this window, click on the [Unblock] button. The Login window prompting for the System Name and Password will be displayed. If the [Windows Security Alert] window is not displayed, please go to Section 2 "Login."



2. Log In

The System Name and Password are not set up in the network camera, network encoder, and network recorder in their factory default settings. Leave the System Name and Password field empty and click on the [OK] button.

If the System Name and Password are set up, enter them in the respective fields and click on the [OK] button.



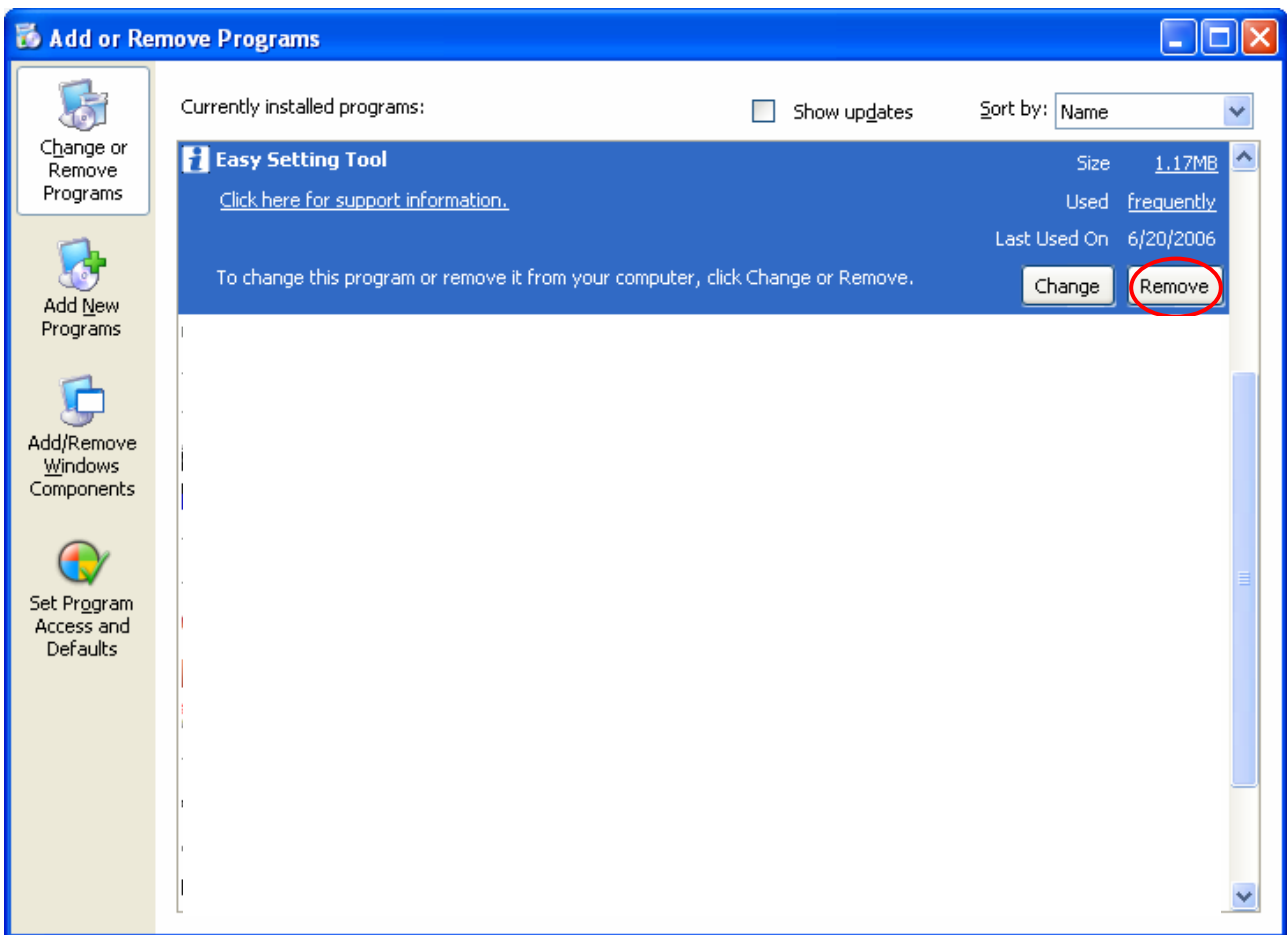
Uninstall instructions

To uninstall the Software, go to [Start] -> [Control Panel] then click on the [Add or Remove Programs].

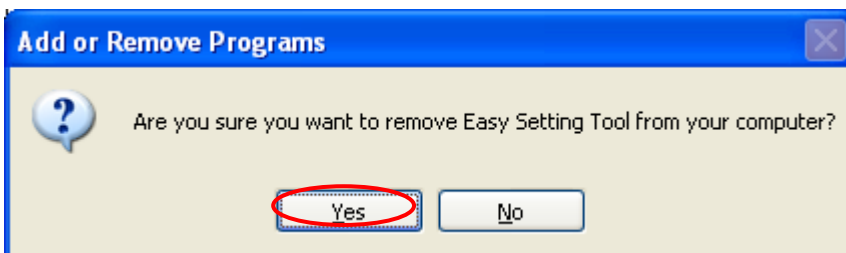


Add or Remove Programs

Select [Easy Setting Tool] from the list in [Change or Remove Programs], then click on the [Remove] button.



By clicking [Yes] in the [Add or Remove Programs] confirmation window, the uninstallation process begins.



Ikegami

IKEGAMI ELECTRONICS (U. S. A.) INC, 37 Brook Avenue, Maywood, NJ07607
IKEGAMI ELECTRONICS (EUROPE) GMBH Ikegami Strassel, D-41460 Neuss, Germany

TEL : 201-368-9171
TEL : 02131-1230